

NEGARA BRUNEI DARUSSALAM

**AIP
SUPPLEMENT**

TEL : 673-2-331730
AFS : WBSBYNYX
FAX : 673-2-331706
673-2-331730
E-mail: ais.brunei@civil-aviation.gov.bn
Website: www.mincom.gov.bn/dca

**AERONAUTICAL INFORMATION SERVICE
DEPARTMENT OF CIVIL AVIATION
MINISTRY OF TRANSPORT AND
INFOCOMMUNICATIONS
BRUNEI INTERNATIONAL AIRPORT, BB2513**

03/20
16th April

CORRIGENDA

REFER TO CHARTS OF AIRAC AIP SUPPLEMENT 01/20 DATED 13 FEB 2020,
THE FOLLOWING DETAILS ARE TO BE CHANGED AS FOLLOWS :-

1. STANDARD DEPARTURE CHARTS INSTRUMENT (SID) RWY 05
 - Routeing
DER05-**ADBEP**(A1500-,L) – DOVIL(A1500,R) – OLTAGA(A1500,R) –
MIBUX(A1500)
2. INSTRUMENT APPROACH CHART – ICAO (CAT H) RWY 05
 - MISSED APPROACH (RWY05) 4.2%
Continuous Initial climb to 1550' required – climb straight ahead to **ADBEP**
then left to DOVIL, left to NOMUT and hold.

REMARK : Rest no change

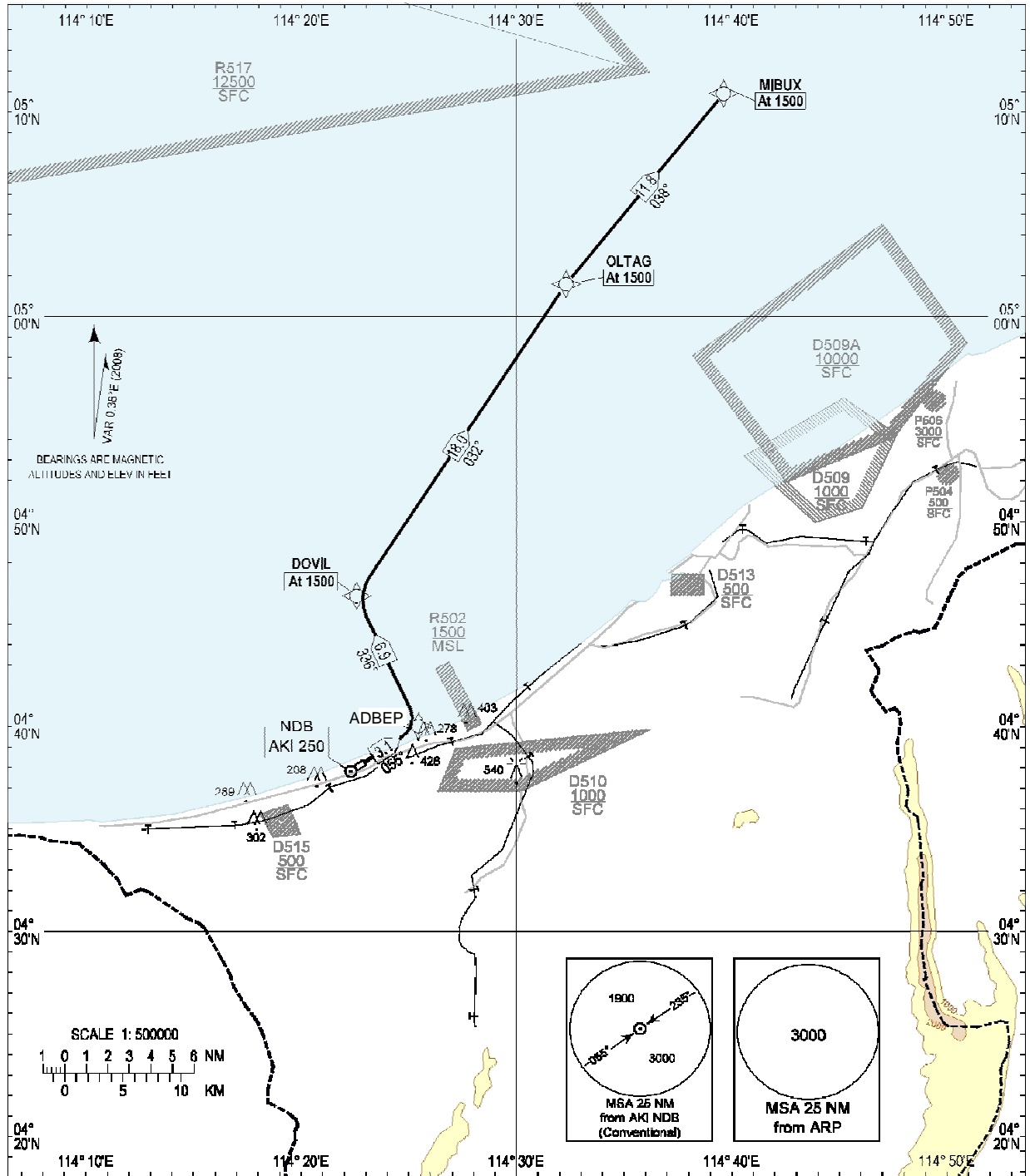
**RIDZUAN HAJI AHMAD
ACTING DIRECTOR OF CIVIL AVIATION
DEPARTMENT OF CIVIL AVIATION
BRUNEI DARUSSALAM**

**STANDARD DEPARTURE CHART
INSTRUMENT (SID)**

**TRANSITION ALTITUDE
11000ft**

TWR 122.10

**ANDUKI
RNAV (GNSS)
RWY 05**



Routing

DER05-ADBEP[A1500,L]-DOVIL[A1500,R]-OLTAG[A1500,R]-MIBUX[A1500]

Notes

1. Close-in obstacles exist for RWY 05 departures.
2. For obstacle clearance, climb at 5.0% (minimum) to 1500' AMSL.
3. Critical nav aids: Nil.
4. All waypoints are fly-by.
5. All positions are referenced to WGS84 datum.

DEPARTURE END RWY 05

AK05D 043814.49N 1142254.46E

WAYPOINTS

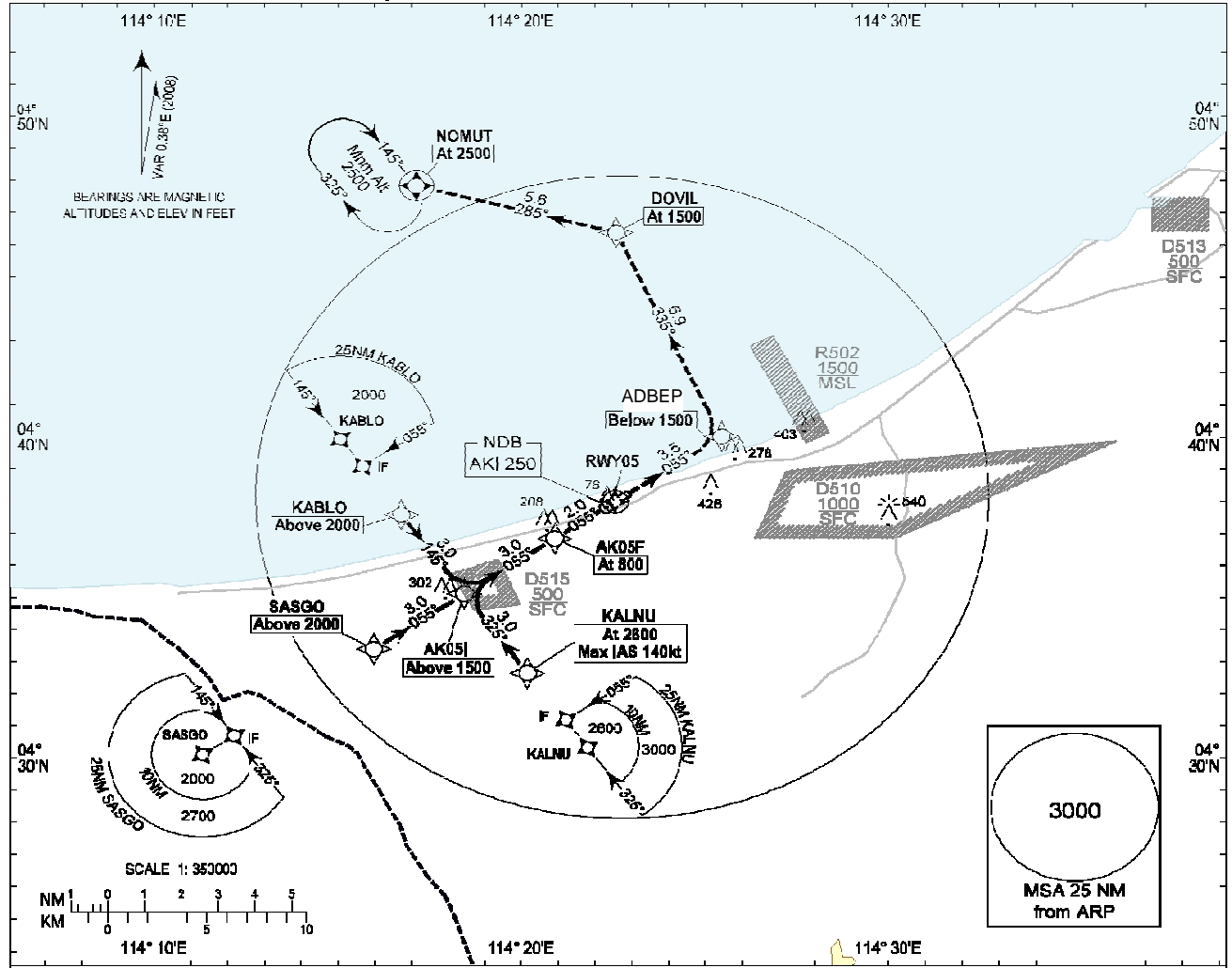
ADBEP	044000.65N	1142526.23E
DOVIL	044621.92N	1142234.52E
OLTAG	050135.26N	1143218.83E
MIBUX	051053.70N	1143938.41E

**INSTRUMENT
APPROACH
CHART - ICAO**

AERODROME ELEV 9ft
HEIGHTS RELATED TO
THR RWY 05 - ELEV 9ft
MIN TEMP 20°C

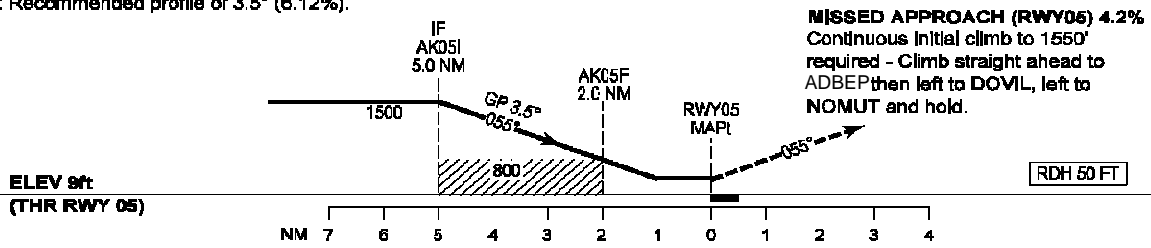
TWR 122.10

**ANDUKI
RNAV (GNSS)
(CAT H) RWY 05**



Transition Altitude: 11000ft

Note: Recommended profile of 3.5° (6.12%).



MISSED APPROACH (RWY05) 4.2%
Continuous initial climb to 1550' required - Climb straight ahead to ADBEP then left to DOVIL, left to NOMUT and hold.

OCA(H)								
Category of Aircraft	H	NM TO THR						
		7	6	5	4	3	2	1
LNAV/VNAV	380 (361)							
LNAV	410 (401)	2680 (2651)	2290 (2281)	1920 (1911)	1550 (1541)	1170 (1161)	800 (791)	430 (421)