

# NEGARA BRUNEI DARUSSALAM

AIP  
SUPPLEMENT

TEL : 673-2-331730  
AFS : WBSBYNYX  
FAX : 673-2-331706  
673-2-331730  
E-mail: [ais.brunei@civil-aviation.gov.bn](mailto:ais.brunei@civil-aviation.gov.bn)  
Website: [www.civil-aviation.gov.bn](http://www.civil-aviation.gov.bn)

AERONAUTICAL INFORMATION SERVICE  
DEPARTMENT OF CIVIL AVIATION  
MINISTRY OF COMMUNICATIONS  
BRUNEI INTERNATIONAL AIRPORT, BB2513

04/12  
12<sup>th</sup> Mar

AIRAC

## ANDUKI HELIPORT

### 1. INTRODUCTION

- 1.1 This AIP Supplement is to notify the establishment of Anduki Heliport characteristics including relevant charts of the heliport.
- 1.2 The information of Anduki Heliport characteristics are shown on page 2 until 8 of this AIP Supplement and the following charts which are established shown as follows :
  - (a) Aerodrome / Heliport Chart ( Attachment A)
  - (b) GNSS Standard Departure Chart Instrument (SIDs) Rwy 05 ( Attachment B)
  - (c) GNSS Standard Arrival Chart Instrument (STAR) Rwy 05 ( Attachment C)
  - (d) Instrument Approach Chart Rwy 05 ( Attachment D)
  - (e) GNSS Standard Departure Chart Instrument (SIDs) Rwy 23 ( Attachment E)
  - (f) GNSS Standard Arrival Chart Instrument (STAR) Rwy 23 ( Attachment F)
  - (g) Instrument Approach Chart Rwy 23 ( Attachment G)
- 1.3 The following information shall be incorporated into AIP Brunei Darussalam page WBAK AD 3-1 section AD 3 HELIPORT.

### 2. IMPLEMENTATION

- 2.1 This AIP Supplement and relevant charts will be effective on **03 May 2012**. A Trigger NOTAM which will be issued notifying the effective date of implementation of flight procedures.

### 3. CANCELLATION

- 3.1 This AIP Supplement will remain active until the information is incorporated in the AIP Brunei Darussalam.

**Haji Omarali Bin Haji Mohd Ja'afar**  
**Director of Civil Aviation**  
**Department of Civil Aviation**  
**Brunei Darussalam**

### AD 3. HELIPORT

#### WBAK HELIPORT 3.1 HELIPORT LOCATION INDICATOR AND NAME

##### WBAK – ANDUKI / Private

#### WBAK HELIPORT 3.2 HELIPORT GEOGRAPHICAL AND ADMINISTRATIVE DATA

1	Heliport reference point coordinates and site at heliport	0438151N 11422561E
2	Direction and distance from (city)	Nil
3	Elevation/Reference temperature	2.78M / Nil
4	Geoid undulation at ELEV PSN	Nil
5	MAG VAR/Annual change	0.36° E
6	Heliport Administration, address, telephone, telefax, AFS	Anduki Airfield, Brunei Shell Petroleum Company Sendirian Berhad, Seria KB3534, Negara Brunei Darussalam.  Tel Nr : 673-3372203 Fax Nr : 673-3372125 AFS: : Nil
7	Types of traffic permitted (IFR/VFR)	VFR
8	Remarks	Nil

#### WBAK HELIPORT 3.3 OPERATIONAL HOURS

1	Heliport Administration	2300 – 0800UTC
2	Customs and immigration	By prior arrangement
3	Health and Sanitation	By prior arrangement
4	AIS Briefing Office	Nil
5	ATS Reporting Office (ARO)	Nil
6	MET Briefing Office	Nil
7	ATS	2200 – 1000UTC
8	Fuelling	MON-SUN between 2200/1000 UTC Pre-notified during working hours : Tel : 673-3372203
9	Handling	2200 – 1000UTC
10	Security	H24
11	De-icing	Nil
12	Remarks	Private Heliport

### WBAK HELIPORT 3.4 HANDLING SERVICES AND FACILITIES

1	Cargo-handling facilities	By prior arrangement
2	Fuel / Oil types	Jet A1
3	Fuelling facilities / Capacity	Pre-notified during working hours : Tel : 673-3372203
4	De-icing facilities	Nil
5	Hangar space for visiting helicopter	Nil
6	Repair facilities for visiting helicopter	Nil
7	Remarks	Nil

### WBAK HELIPORT 3.5 PASSENGER FACILITIES

1	Hotels	Seria 6km, Kuala Belait 22 km, Bandar Seri Begawan 75km
2	Restaurants	Seria 6km, Lumut 11km, Kuala Belait 22 km, Bandar Seri Begawan 75km
3	Transportation	By prior arrangement
4	Medical facilities	First Aid Only (semi-equipped health centre 9km away and fully equipped hospital 22km away)
5	Bank and Post Office	Seria 6km, Kuala Belait 22 km, Bandar Seri Begawan 75km
6	Tourist Office	Nil
7	Remarks	Nil

### WBAK HELIPORT 3.6 RESCUE AND FIRE FIGHTING SERVICES

1	Heliport category for fire fighting	Category 3 (22:00 – 10:00UTC)
2	Rescue equipment	<p>(1) Appliances available for immediate use are :-  1 x Rescue Vehicle  1 x Crash Rescue Tender (CRT)</p> <p>(2) Extinguishing Agents available in the CRT are:-  3500 litres water  500 litres foam agent(discharge rate of water/foam=3000litres/min)  150 kg dry chemicals  5 kg CO2 (portable)</p> <p>(3) Additional reserves maintained at the main BSP Fire Station are:-  1 x Crash Rescue Tender (CRT)  2 x Foam/water Tender (FWT)  1 x Rapid Rescue Vehicle (RRV)  1 x Hose Layer  3 x Ambulances  1 x Emergency Common Vehicle (ECV)</p>
3	Capacity for removal of disable helicopter	Available, S92 equivalent
4	Remarks	Nil

### WBAK HELIPORT 3.7 SEASONAL AVAILABILITY - CLEARING

1	Types of clearing equipment	Nil
2	Clearance priorities	Nil
3	Remarks	Nil

### WBAK HELIPORT 3.8 APRONS, TAXIWAYS AND CHECK LOCATIONS/POSITIONS DATA

1	Apron/helicopter stands surface and strength	Tarmac / Concrete / Not Available
2	Ground taxiway width, surface and designation	20M, Tarmac and Concrete and A, B and C
3	Air taxiway width and designation	20M, Tarmac and Concrete and A, B and C
4	Altimeter checkpoint location and elevation	Apron and 9 ft
5	VOR checkpoints	Nil
6	INS checkpoints	Nil
7	Remarks	Nil

### WBAK HELIPORT 3.9 MARKINGS AND MARKERS

1	Final approach and take-off markings	Solid white line around perimeter, broken white centre-line, 'piano keys' at thresholds with white 'H' and orientation marked (05/23)
2	TWY, air TWY, air transit route markers	Yellow taxiway markings, blue edge lighting, holding point guard lights.
3	Remarks	Illuminated Holding point and FATO exit Marker Boards

### WBAK HELIPORT 3.10 HELIPORT OBSTACLES

In approach/TKOF areas			At helicopter		Remarks
1A			1B		
Obstacle type Elevation			Obstacle type Elevation		Nil
Area affected	Markings/LGT	Coordinates	Markings/LGT	Coordinates	
a	b	c	a	b	
Nil	Nil	Nil	Nil	Nil	

### WBAK HELIPORT 3.11 METEOROLOGICAL INFORMATION PROVIDED

1	Associated MET Office	WBSB / Brunei International
2	Hours of service MET Office outside hours	H24
3	Office responsible for TAF preparation Periods of validity	Meteorological Forecast Office H30
4	Trend forecast interval of issuance	TAF 0024:0606:1212 and 1818: Takeoff Forecast available for schedule flights and unscheduled flights (on request only)
5	Briefing/Consultation provided	Forecast, Briefing and Routed Area forecast
6	Flight documentation Language (s) used	English
7	Charts and other information available for briefing or consultation	Surface Chart : SIG WX Chart : Upper Chart, Satellite weather pictures. NWP Chart
8	Supplementary equipment available for providing information	Doppler Radar / Key Board Display System / AWOS / AFTN
9	ATS units provided with information	DATIS
10	Additional information (limitation of services, etc.)	Forecaster available as from 2130UTC to 0600UTC

### WBAK HELIPORT 3.12 HELIPORT DATA

1	Heliport type	Surface Level
2	TLOF dimensions	Nil
3	FATO, GEO bearings	235°/055°
4	FATO dimensions and SFC type	810m x 32m, asphalt
5	TLOF, SFC and BRG strength	Nil
6	Coordinates of geometric centre TLOF or THR of FATO and geoid undulation	05THR: 4°37.99'N 114°22.55'E 23THR: 4°38.24'N 114°22.91'E
7	TLOF/FATO, elevation and slope	2.78m, Nil
8	Safety area dimensions	Nil
9	HEL CWY dimensions	Nil
10	Obstacle-free sector	Nil
11	Remarks	Nil

### WBAK HELIPORT 3.13 DECLARED DISTANCES

	<i>TODAH (M)</i>	<i>RTODAH (M)</i>	<i>LDAH (M)</i>	<i>Remarks</i>
	<i>1</i>	<i>2</i>	<i>3</i>	<i>4</i>
FATO 05	Nil	810m	Nil	Nil
FATO 23	Nil	810m	Nil	Nil

### WBAK HELIPORT 3.14 APPROACH AND FATO LIGHTING

1	APP LGT system type, LEN, INTST	Single bar, with running strobes
2	Type of visual approach slope indicator system	A-PAPI (3.5°)
3	FATO area LGT characteristics and location	White edge lighting
4	Aiming point LGT characteristics and location	Nil
5	TLOF LGT system characteristics and location	Nil
6	Remarks	FATO/TLOF shared area

### WBAK HELIPORT 3.15 OTHER LIGHTING, SECONDARY POWER SUPPLY

1	Heliport BCN location and characteristics Hours of operation	Nil
2	WDI location and LGT	Nil
3	TWY edge and centre line lighting	Inset blue edge lights
4	Secondary power supply/switch-over time	Nil
5	Remarks	Nil

### WBAK HELIPORT 3.16 ATS AIRSPACE

1	Designation and lateral limits	ATZ
2	Vertical limits	2000 ft
3	Airspace classification	Class C
4	ATS unit call sign Language(s)	Anduki Tower, English
5	Transition altitude	11,000 ft
6	Remarks	Nil

### WBAK HELIPORT 3.17 ATS COMMUNICATION FACILITIES

Service Designation	Call sign	Frequency	Hours of Operation	Remarks
1	2	3	4	5
APP	Nil	Nil	Nil	Nil
TWR	Anduki Tower	122.10 Mhz	22:00 – 10:00 UTC	Nil
FIS	Anduki Tower	122.10 Mhz	22:00 – 10:00 UTC	Nil

### WBAK HELIPORT 3.18 RADIO NAVIGATION AND LANDING AIDS

1	Type of aid and VAR (for VOR, give station declination)	NDB
2	ID	AKI
3	Frequency	250.0 MHz
4	Hours of operation	H24
5	Position of transmitting antenna coordinates	4°32 49.1'N 114°22 18.1'E
6	Elevation of DME transmitting antenna	Nil
7	Remarks	Nil

**WBAK HELIPORT 3.19 LOCAL TRAFFIC REGULATIONS**

**NOT APPLICABLE**

**WBAK HELIPORT 3.20 NOISE ABATEMENT PROCEDURES**

**NOT APPLICABLE**

**WBAK HELIPORT 3.21 FLIGHT PROCEDURES**

**NOT APPLICABLE**

**WBAK HELIPORT 3.22 ADDITIONAL INFORMATION**

**NOT APPLICABLE**

**WBAK HELIPORT 3.23 CHARTS RELATED TO A HELIPORT**

a)	Aerodrome / Heliport Chart
b)	GNSS Standard Departure Chart Instrument (SIDs) Rwy 05
c)	GNSS Standard Arrival Chart Instrument (STAR) Rwy 05
d)	Instrument Approach Chart Rwy 05
e)	GNSS Standard Departure Chart Instrument (SIDs) Rwy 23
f)	GNSS Standard Arrival Chart Instrument (STAR) Rwy 23
g)	Instrument Approach Chart Rwy 23



AERODROME CHART 4°38'16.1"N  
114°22'56.1"E

ELEV 2.78m

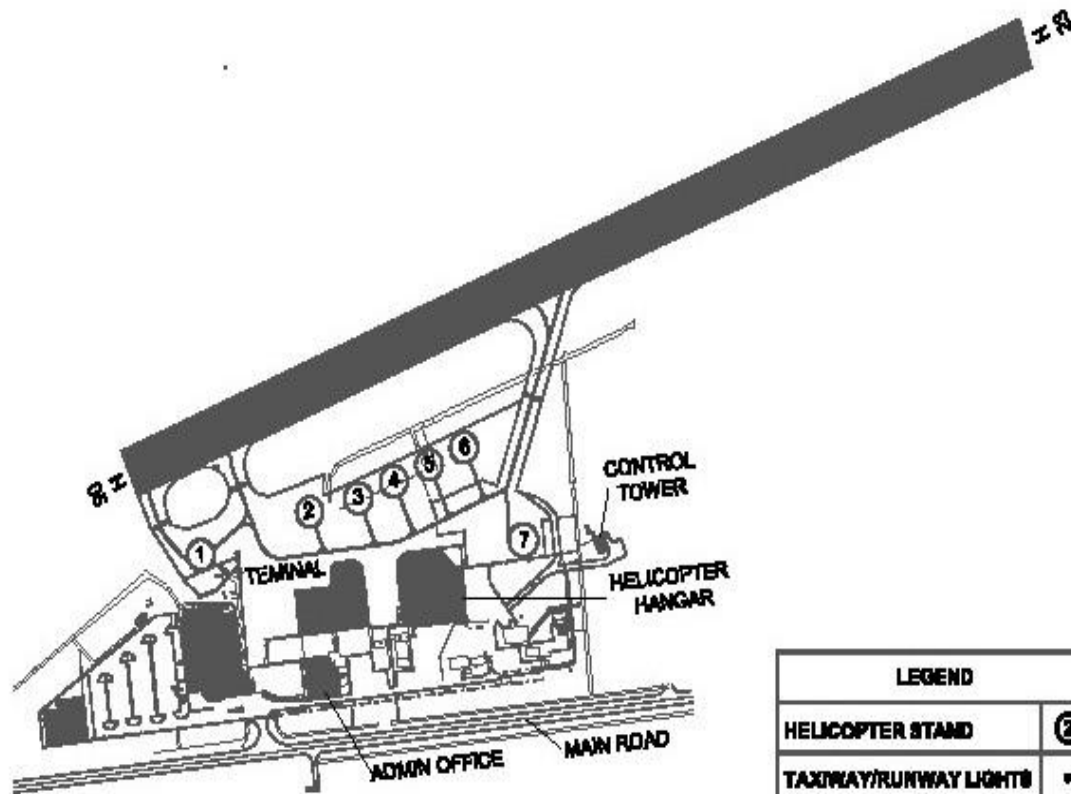
TOWER 122.1

ANDUKI HELIPORT (WBAK)

RWY	DIRECTION	THR	BEARING STRENGTH
05	N/A	N/A	N/A
23	N/A	N/A	N/A

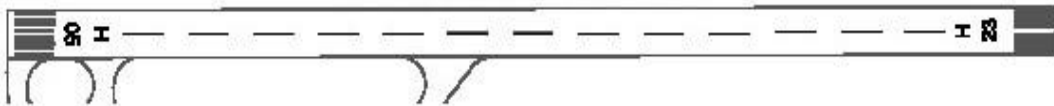
ELEVATIONS AND DIMENSION IN METRES  
BEARING ARE MAGNETIC

VAR 3.0°E (2006)

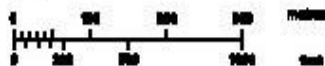
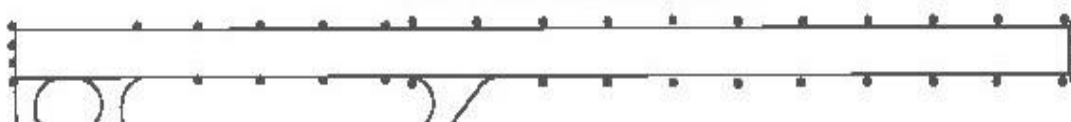


LEGEND	
HELICOPTER STAND	②
TAXIWAY/RUNWAY LIGHTS	•

MARKING AIDS RWY 05/23 AND EXIT TWY



LIGHTING AIDS RWY 05/23 AND EXIT TWY



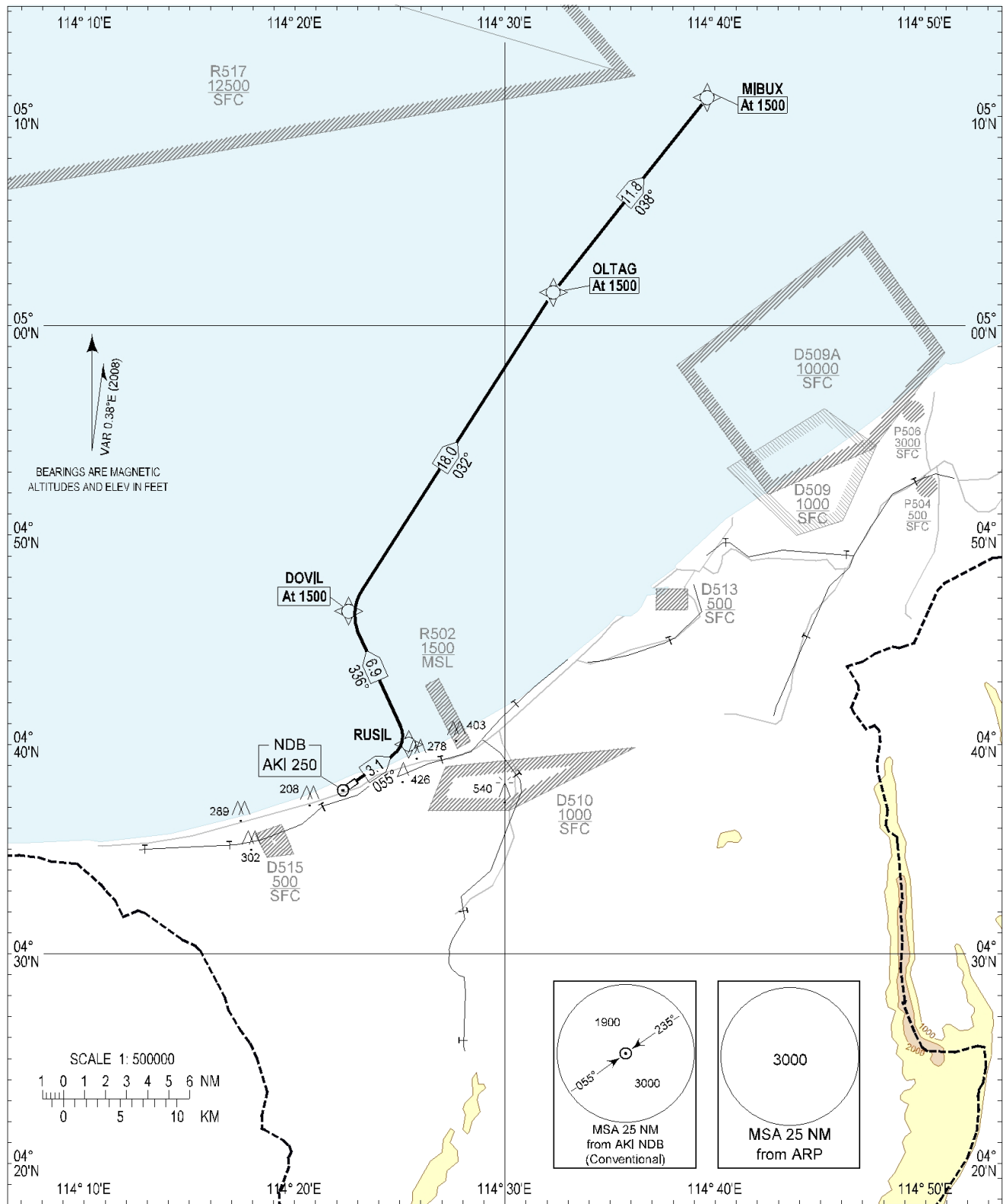
**STANDARD DEPARTURE CHART  
INSTRUMENT (SID)**

**Attachment B**

**ANDUKI  
RNAV (GNSS)  
RWY 05**

**TRANSITION ALTITUDE  
11000ft**

**TWR 122.10**



**Routing**  
DER05 - RUSIL[A1500,-,L] - DOVIL[A1500,R] - OLTAG[A1500,R] - MIBUX[A1500]

<b>DEPARTURE END RWY 05</b>		
AK05D	043814.49N	1142254.46E
<b>WAYPOINTS</b>		
RUSIL	044000.65N	1142526.23E
DOVIL	044621.92N	1142234.52E
OLTAG	050135.26N	1143218.83E
MIBUX	051053.70N	1143938.41E

- Notes**
1. Close-in obstacles exist for RWY 05 departures.
  2. For obstacle clearance, climb at 5.0% (minimum) to 1500' AMSL.
  3. Critical navaids: Nil.
  4. All waypoints are fly-by.
  5. All positions are referenced to WGS84 datum.

CHANGES: New Chart

**STANDARD ARRIVAL CHART  
INSTRUMENT (STAR)**

TRANSITION ALTITUDE  
11000ft

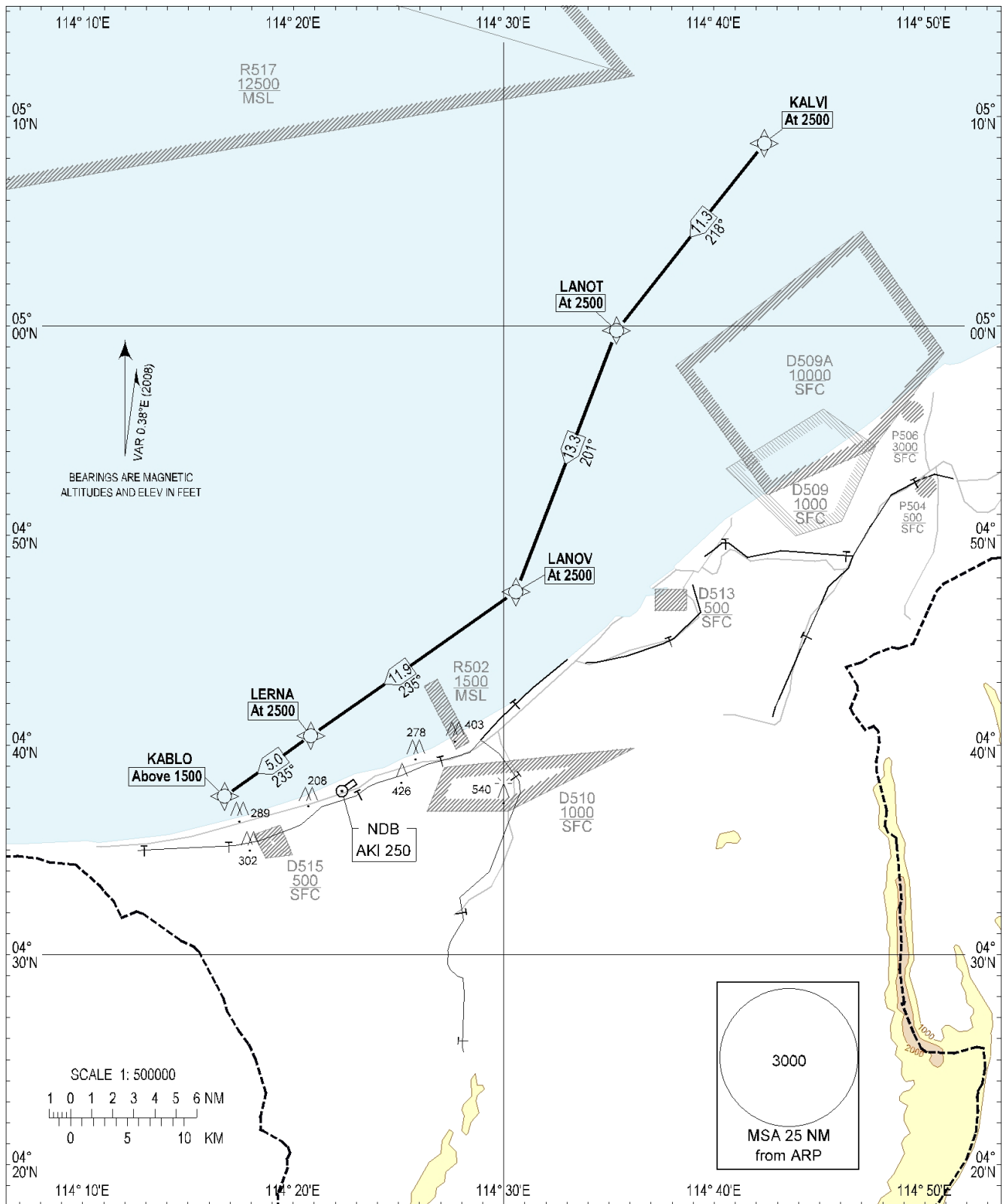
TWR 122.10

Attachment C

ANDUKI

RNAV (GNSS)

RWY 05



**Notes**

1. Critical nav aids: Nil.
2. All waypoints are fly-by.
3. All positions are referenced to WGS84 datum.

**WAYPOINTS**

KALVI	050842.90N	1144223.66E
LANOT	045947.16N	1143521.91E
LANOV	044719.23N	1143034.62E
LERNA	044027.37N	1142049.40E
KABLO	043734.14N	1141643.38E

CHANGES: New Chart

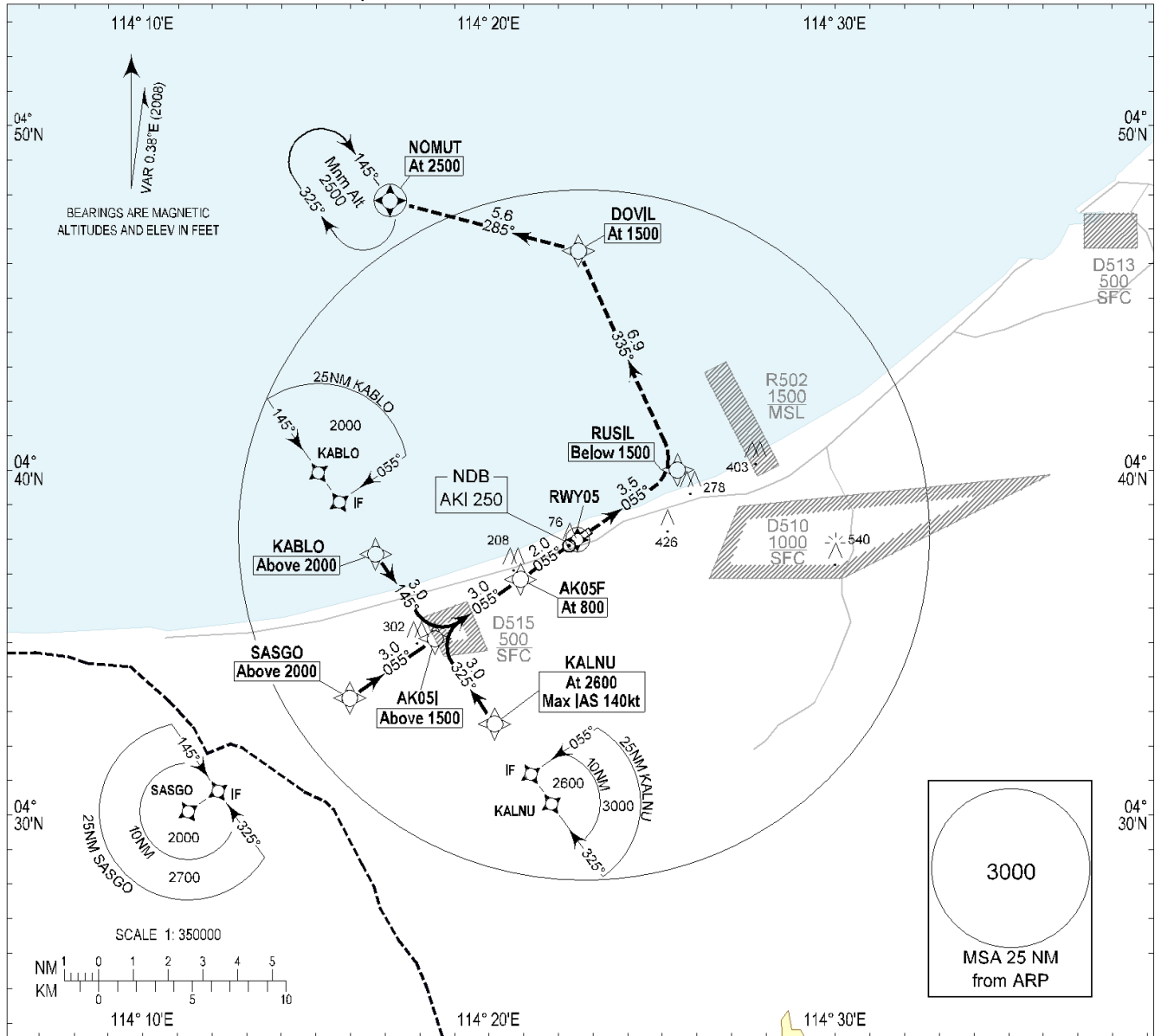
**INSTRUMENT  
APPROACH  
CHART - ICAO**

**AERODROME ELEV 9ft**  
HEIGHTS RELATED TO  
THR RWY 05 - ELEV 9ft  
MIN TEMP 20°C

**Attachment D**

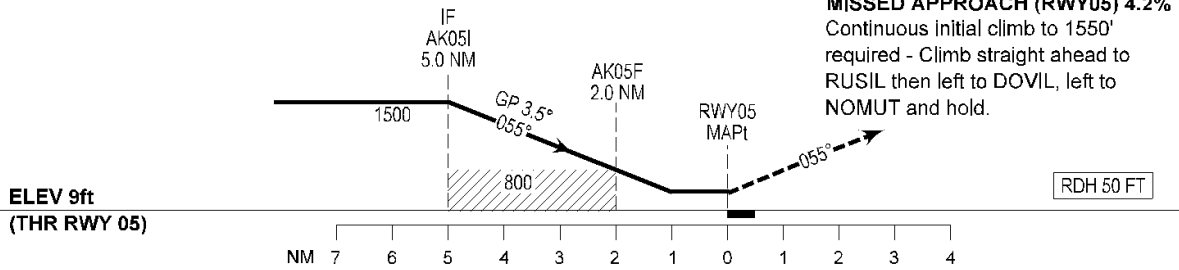
**ANDUKI  
RNAV (GNSS)  
(CAT H) RWY 05**

TWR 122.10



**Transition Altitude: 11000ft**

Note: Recommended profile of 3.5° (6.12%).



**OCA(H)**

Category of Aircraft	H	NM TO THR						
		7	6	5	4	3	2	1
LNAV/VNAV	390 (381)							
LNAV	410 (401)	2660 (2651)	2290 (2281)	1920 (1911)	1550 (1541)	1170 (1161)	800 (791)	430 (421)

CHANGES: New Chart

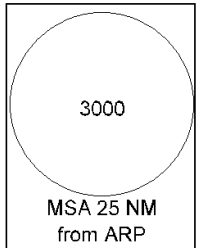
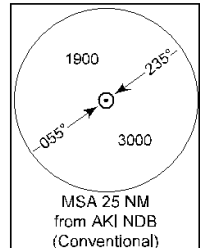
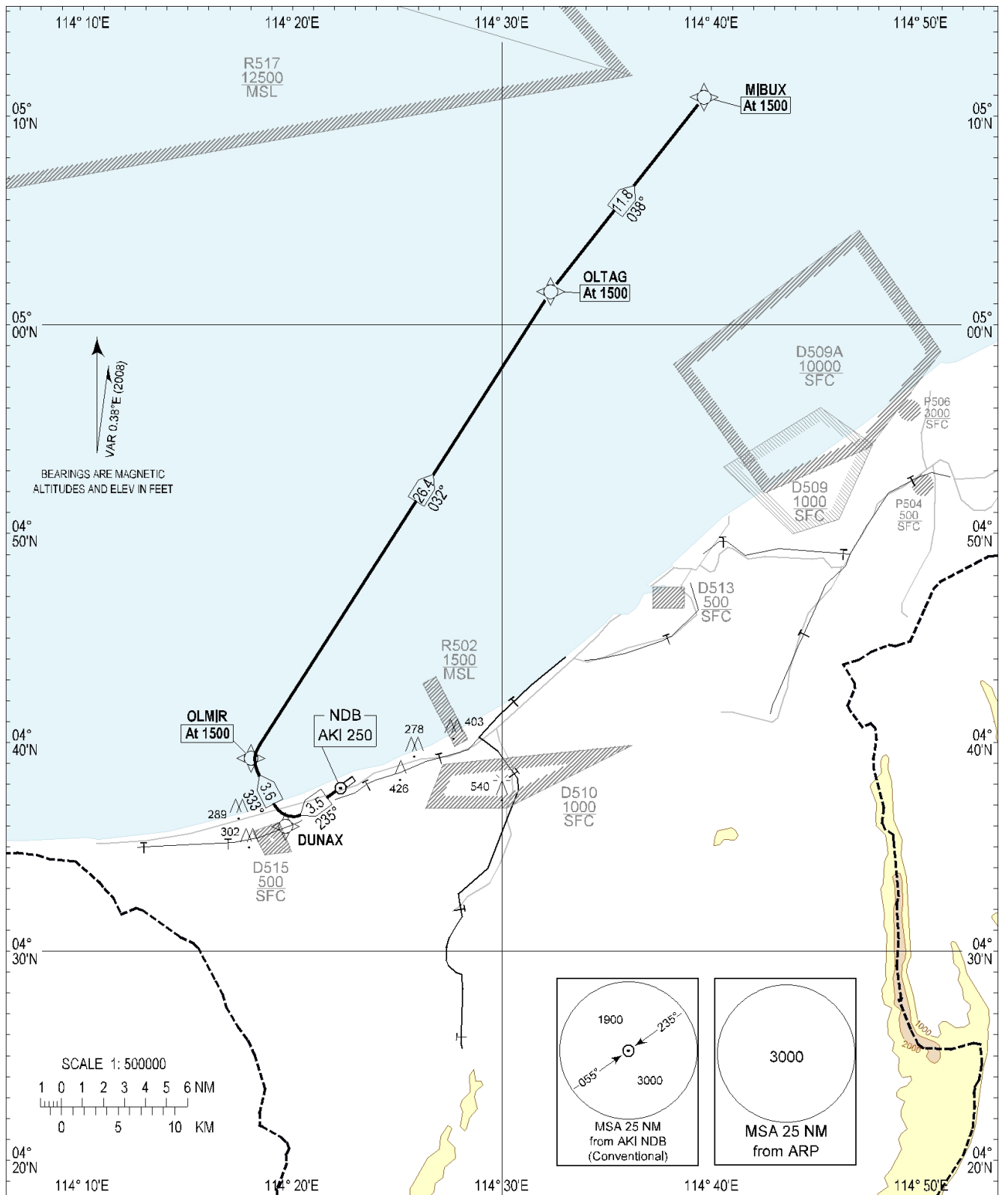
**STANDARD DEPARTURE CHART  
INSTRUMENT (SID)**

**Attachment E**

**ANDUKI  
RNAV (GNSS)  
RWY 23**

**TRANSITION ALTITUDE  
11000ft**

**TWR 122.10**



**Routing**  
DER23-DUNAX[A1500-,R]-OLMIR[A1500,R]-OLTAG[A1500,R]-MIBUX[A1500]

<b>DEPARTURE END RWY 23</b>		
AK23D	043759.40N	1142232.88E
<b>WAYPOINTS</b>		
DUNAX	043558.71N	1141940.37E
OLMIR	043914.40N	1141801.19E
OLTAG	050135.26N	1143218.83E
MIBUX	051053.70N	1143938.41E

- Notes**
1. Close-in obstacles exist for RWY 23 departures.
  2. For obstacle clearance, climb at 5.0% (minimum) to 1500' AMSL.
  3. Critical navaids: Nil.
  4. All waypoints are fly-by.
  5. All positions are referenced to WGS84 datum.

CHANGES: New Chart

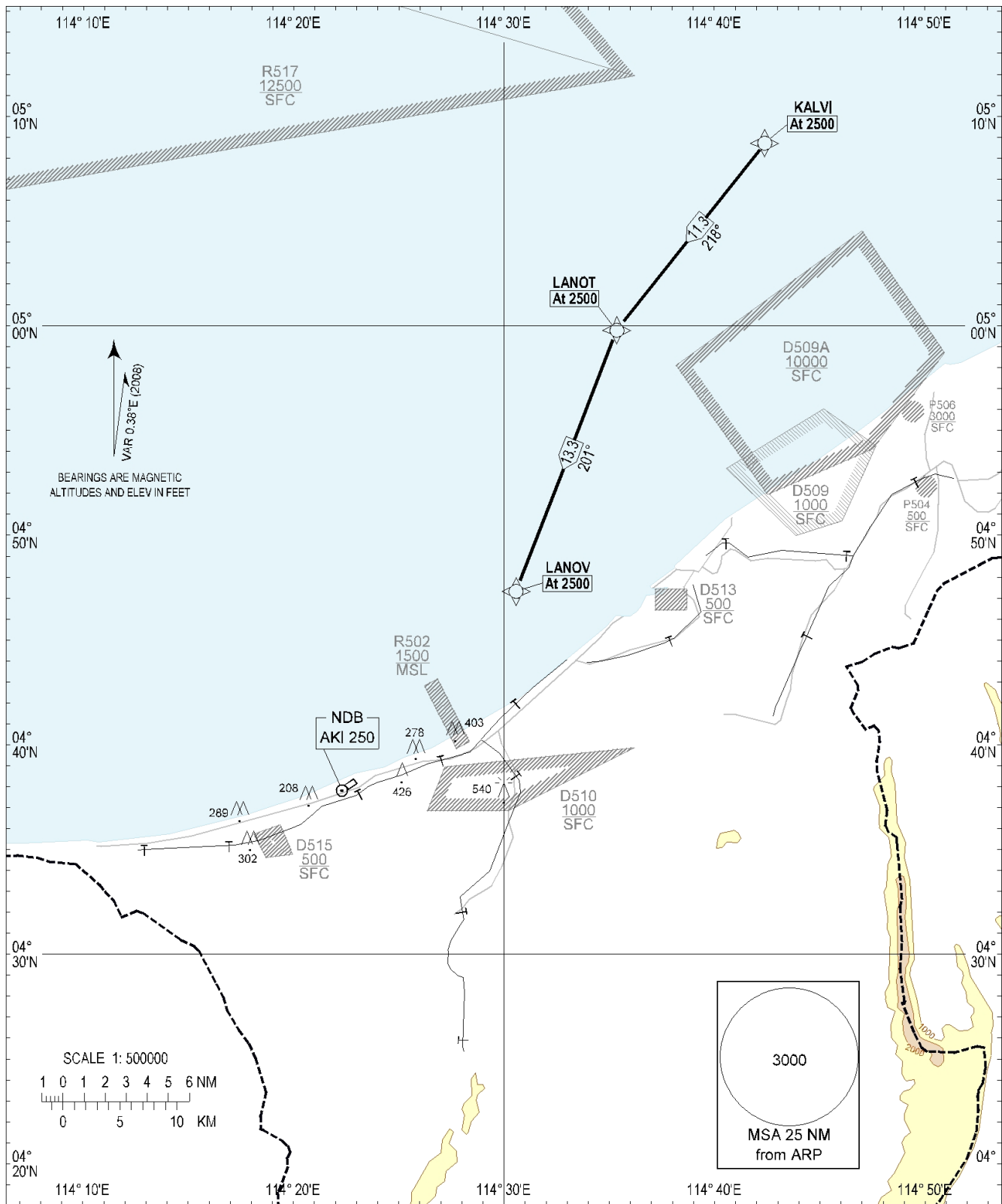
**STANDARD ARRIVAL CHART  
INSTRUMENT (STAR)**

**Attachment F**

**ANDUKI  
RNAV (GNSS)  
RWY 23**

**TRANSITION ALTITUDE  
11000ft**

**TWR 122.10**



**Notes**

1. Critical nav aids: Nil.
2. All waypoints are fly-by.
3. All positions are referenced to WGS84 datum.

**WAYPOINTS**

KALVI	050842.90N	1144223.66E
LANOT	045947.16N	1143521.91E
LANOV	044719.23N	1143034.62E

CHANGES: New Chart

**INSTRUMENT  
APPROACH  
CHART - ICAO**

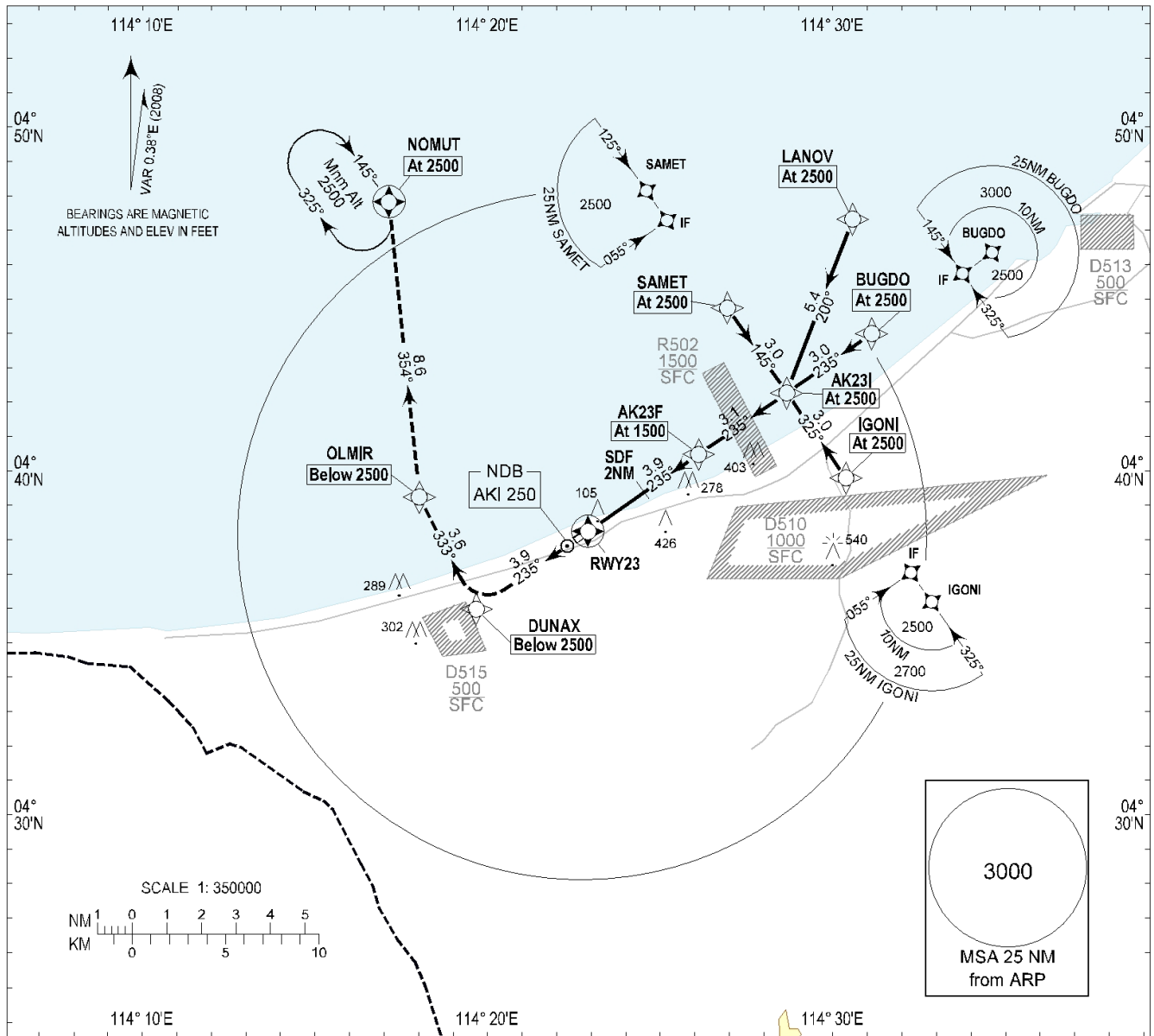
**AERODROME ELEV 9ft**  
HEIGHTS RELATED TO  
THR RWY 23 - ELEV 9ft  
MIN TEMP 20°C

TWR 122.10

Attachment G

ANDUKI

RNAV (GNSS)  
(CAT H) RWY 23



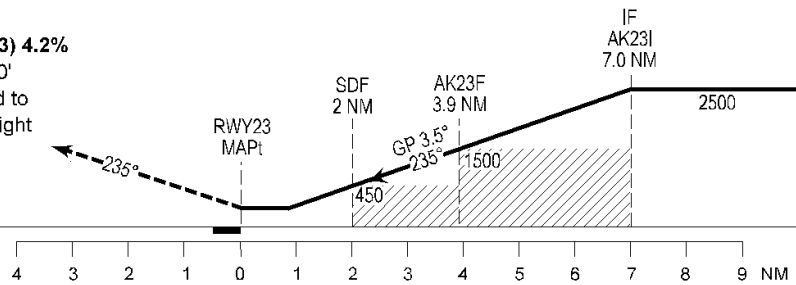
Transition Altitude: 11000ft

Note: Recommended profile of 3.5° (6.12%).

**MISSED APPROACH (RWY23) 4.2%**

Continuous initial climb to 2500'  
required - Climb straight ahead to  
DUNAX then right to OLMIR, right to  
NOMUT and hold.

RDH 50 FT



**OCA(H)**

Category of Aircraft	H	NM TO THR						
		7	6	5	4	3	2	1
LNAV/VNAV	380 (371)							
LNAV	410 (401)	2660 (2651)	2290 (2281)	1920 (1911)	1550 (1541)	1170 (1161)	800 (791)	430 (421)

CHANGES: New Chart